

LION ARTS  
FACTORY



# VENUE SPECS

LION ARTS FACTORY  
KAURNA LAND

# INTRODUCTION

## PRODUCTION

Boasting a state of the art PA & lighting package, 2.5m X 4m LED screen, ample mic & cabling packages, and friendly FOH staff with years of experience, Lion Arts has the spec to pull off just about any show without bringing in external production.

## ARTIST EXPERIENCE

With some of Australia's largest and most comfortable green rooms, world class production, friendly staff, a generous hospitality offering, on-site parking and a great central location, Lion Arts factory prides itself on offering artists everything necessary for an easy and memorable show.

## MARKETING

Lion Arts Factory offers in-house marketing, including everything from photography, videography, graphic design, newsletters to a subscriber base of 24k and our own paid advertising spend for use across Facebook, Instagram and more upon request.

## PUNTER EXPERIENCE

A heritage listed building with a contemporary fit out, Lion Arts Factory features high ceilings, great sight lines, multiple bars, chill areas, a smoking area and world-class audio visual production (all housed in an elegant but fun setting), giving punters the best possible experience.

## MERCH

- Dedicated merch area
- No commission
- Artist to organise seller or venue can assist

## OUR TEAM

The core team at Lion Arts Factory comes from a music background; venue bookings, festival logistics, marketing, artist management. We are not just a hospitality venue with a stage in the corner - music is in our blood, we care about what we do and this shows in our attention to detail and marketing strategy.

# MAIN ROOM SPECS

PREFERRED PRODUCTION SUPPLIER — NOVATECH

PREFERRED BACKLINE SUPPLIER — ACTION AUDIO LOGIC

## AUDIO

- 1 Audio Console - Avid Venue SC48 with backup UPS APC 240v/450va
- 1 Dolby Lake DLP88 Digital System Controller
- 6 Line Array Speaker L-Acoustics Kudo
- 1 Powered Speaker L-Acoustics 112-P Centre Fill
- 4 Subwoofer L-Acoustics SB218 Dual 18"
- 1 Amp Rack L-Acoustics LA-RAK AES Touring
- 3 Amplified Controller L-Acoustics LA8 4ch
- 8 Active Speaker L-Acoustics 115XT-HiQ
- 1 Subwoofer L-Acoustics DV-Sub Triple 15"
- 1 Powered Speaker L-Acoustics 112-P (Booth)
- 1 Amp Rack L-Acoustics LA-RAK AES Touring
- 3 Amplified Controller L-Acoustics LA8 4ch
- 1 Mass Multicore Whirlwind 58ch 100m
- 1 Custom Mass Splitter - In Custom Rack
- 1 Shure Beta 52A Kick Drum Microphone
- 2 Microphone Shure Beta 91 Half-Cardioid Condenser
- 8 Microphone Sennheiser E904 Cardioid Drum
- 2 Sennheiser E906
- 2 Sennheiser E835
- 1 Sennheiser E815S Switch Mic
- 6 Sure Beta n58
- 8 Shure SM81
- 1 Audix D6
- 8 Superlux CM-H8K Condenser Microphone
- 6 Microphone Shure SM57 Dynamic Instrument
- 6 Microphone Shure Beta 57A Dynamic Instrument
- 6 Microphone Shure SM58 Dynamic Vocal
- 6 Microphone Shure Beta 58A Dynamic Vocal
- 8 BSS AR-133 Active DI
- 4 Microphone Stand K&M Heavy Mini Telescopic Boom

- 20 Microphone Stand K&M Mini Telescopic Boom
- 6 Microphone Stand K&M Tall Telescopic Boom
- 10 Microphone Stand K&M Tall Boom
- 4 Microphone Stand K&M Round Base Straight
- 1 Comms equipment between FOH & Monitors
- 1 COMMS - BELTPACK, FLASHER, HEADSET
- 1 All associated cables

## DJ EQUIPMENT

- 1 Stage Megadeck 900 x 2000mm (on wheels)
- 2 CD Player Pioneer CDJ 2000 Nexus
- 1 DJ Mixer Pioneer DJM 900 Nexus
- 1 Ethernet Switch Netgear Gigabit 8 Port
- 5 Powered speaker qsc k12.2 (12" portable pa)
- 3 Speaker stands to suit
- 1 Powered sub RCF 705

## LIGHTING

- 1 Lighting Console Grandma2 Command Wing and Dell Touchscreen all in one PC
- 6 Moving Profile Martin MAC700
- 8 Moving Wash Light GLP Impression 90/10deg
- 8 Moving Wash Light GLP Impression 90/25deg
- 4 LED Strobe SGM Q7W White Blinders
- 4 LED Stormy 1320CC strobes
- 6 Prolights Pixie Beam
- 3 Haze Machine Base Hazer Pro DMX
- 1 Fan Vornado High Velocity
- 1 Jands DMX splitter (For Universe 1)

## VISION

- 30 LED Panel ROB CB 5.77mm (3.6m x 2.4m)
- 1 Brompton Tessera T1 LED Processor
- 1 Barco PDS902-3G Presentation Switcher
- 1 LED processing computer with Resolume software
- 1 LCD Monitor Dell HD 21.5" Wide Screen
- 1 Distro Jands PDS12-R 3 Phase

MOV is the preferred format for LED screen visuals, PNG the preferred format for still images. Preferred output is 1920 x 1080 but can work with any 16:9/1080p image.

## LED STRIPS

- 42 LED Pixel Mapping Strip 1m
- 5 LED Controller
- 1 Ethernet switch HP 24-way (In back of Stage rack)
- 1 Ethernet switch Netgear 24Port (at FOH OPS Position)

## BACKLINE

- 1 Vox AC30
- 1 Fender Hot Rod Deville 4x10
- 1 Ampeg 4x10 Bass Cabinet
- 1 Ampeg SVT350H Bass Head
- 3 Guitar Stands
- 2 Keyboard Stands

## STAGE DIMENSIONS

13m x 3.5m. 900mm High  
Visible stage space of 7m x 3.5m

# FRONT ROOM SPECS

PREFERRED PRODUCTION SUPPLIER — NOVATECH

In addition to our main band room, we have a secondary front room stage with a cap of up to 300, ideal for underplays (booked within 8 weeks of event date), multi-stage events, informal functions etc.

Please enquire about the front room with the venue booker as relevant.

## AUDIO

- 1 X32 Audio Console Behringer X32 Digital 40ch
- 1 BGULINK Mixer Behringer Ultra Link Pro Line
- 2 S16 Behringer S16 Digital Snake 16In 8Out
- 1 LA8 Amplified Controller L-Acoustics LA8 4ch
- 4 ARCW Active Speaker L-Acoustics ARCS WIDE 2 Way
- 2 SB118 Subwoofer L-Acoustics SB118 Single 18"
- 2 8XT Compact Speaker L-Acoustics 8XT
- 4 HD12A Powered Speaker RCF HD12A

Mics, stands & cable package as per main room.

## LIGHTING

- 2 PIXIEW Moving Wash Light ProLights Pixiewash
- 12 PIXIEB Moving Beam ProLights Pixie Beam
- 7 LEDMPAR2 LED Multipar Litecraft
- 1 STATOMIC DMX Strobe Martin Atomic 3000
- 45 LEDPMS LED Pixel Mapping Strip - Indoor 1m
- 1 HAZEB Haze Machine Base Hazer Pro DMX
- 1 STRMDKXL Stream Deck XL Elgato USB Controller

## STAGE DIMENSIONS

4.5m x 3m. 600mm High





MAIN ROOM





FRONT ROOM





# BAND ROOMS



# CONTACTS



## **BOOKINGS**

**JESSE COULTER**

[JESSE@LIONARTSFACTORY.COM.AU](mailto:JESSE@LIONARTSFACTORY.COM.AU)

## **MARKETING**

**CHARLOTTE BEAN**

[CHARLOTTE@LIONARTSFACTORY.COM.AU](mailto:CHARLOTTE@LIONARTSFACTORY.COM.AU)

## **PRODUCTION**

**DAMON JONES**

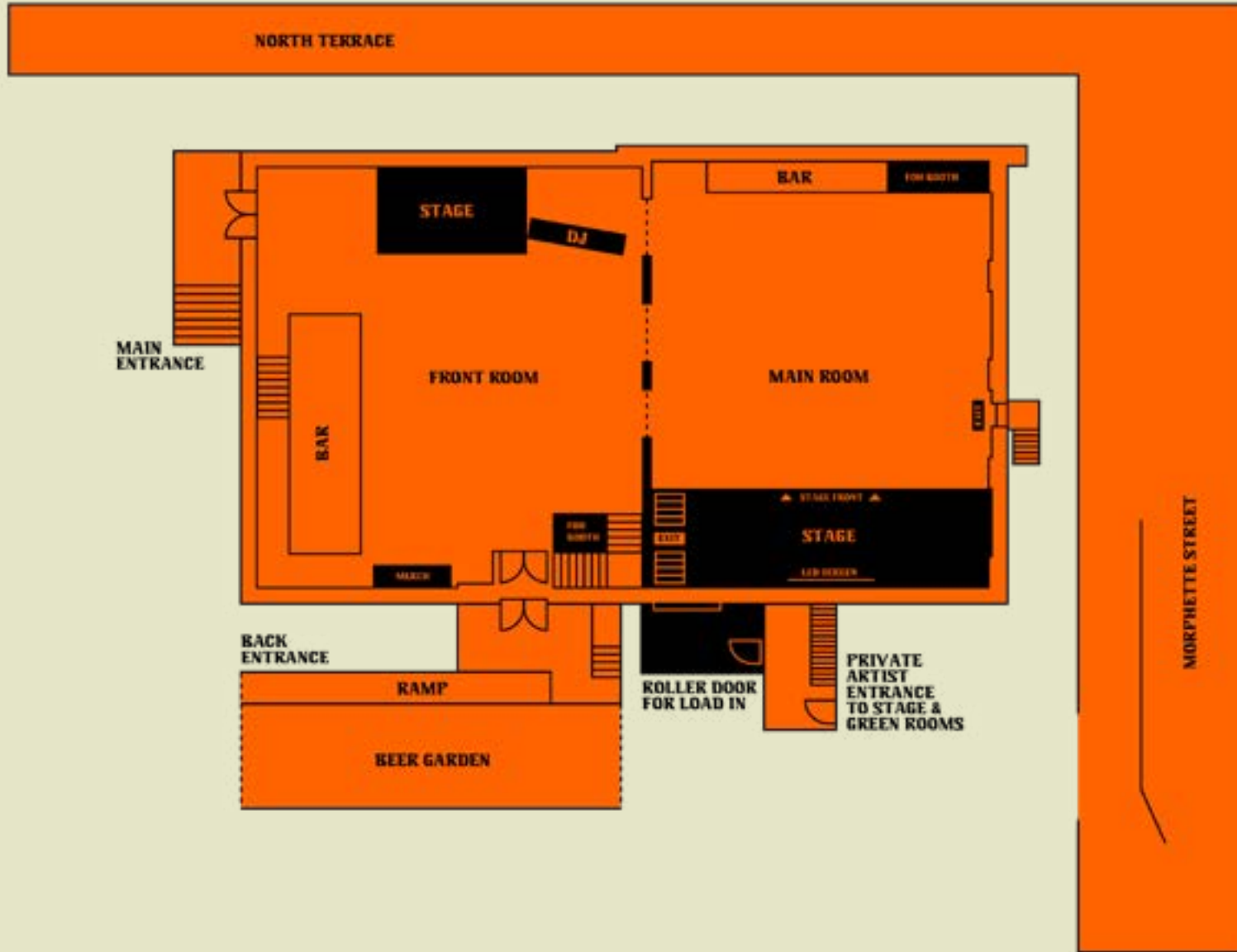
[DAMON@FIVEFOURENTERTAINMENT.COM.AU](mailto:DAMON@FIVEFOURENTERTAINMENT.COM.AU)

## **VENUE MANAGER**

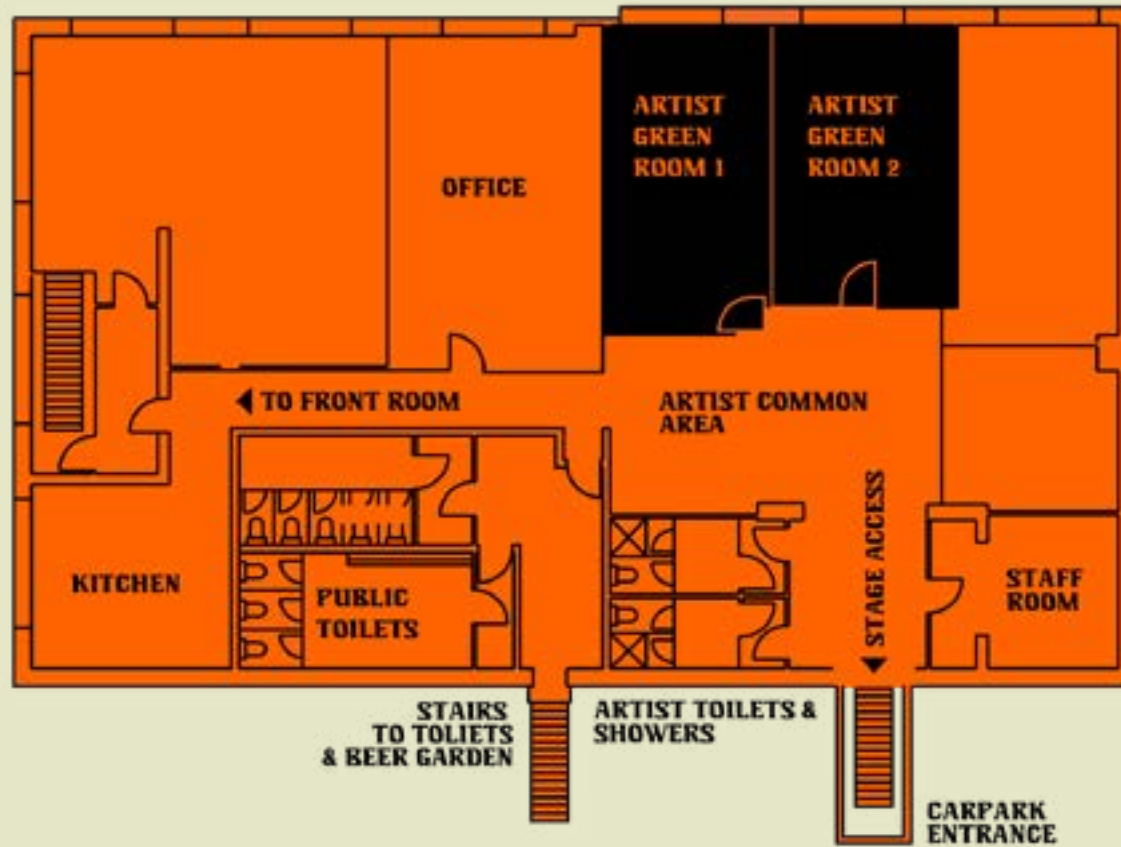
**MACK PATERSON**

[MACK@LIONARTSFACTORY.COM.AU](mailto:MACK@LIONARTSFACTORY.COM.AU)





# UPSTAIRS MAP



# DOWNSTAIRS MAP



*Factory*  
ADELAIDE S.A.