

LION ARTS  
FACTORY



# VENUE SPECS

LION ARTS FACTORY  
KAURNA LAND



# INTRODUCTION

## PRODUCTION

Boasting a state of the art PA & lighting package, 2.5m X 4m LED screen, ample mic & cabling packages, and friendly FOH staff with years of experience, Lion Arts has the spec to pull off just about any show without bringing in external production.

## ARTIST EXPERIENCE

With some of Australia's largest and most comfortable green rooms, world class production, friendly staff, a generous hospitality offering, on-site parking and a great central location, Lion Arts factory prides itself on offering artists everything necessary for an easy and memorable show.

## MARKETING

Lion Arts Factory offers in-house marketing, including everything from photography, videography, graphic design, newsletters to a subscriber base of 24k and our own paid advertising spend for use across Facebook, Instagram and more upon request.

## PUNTER EXPERIENCE

A heritage listed building with a contemporary fit out, Lion Arts Factory features high ceilings, great sight lines, multiple bars, chill areas, a smoking area and world-class audio visual production (all housed in an elegant but fun setting), giving punters the best possible experience.

## MERCH

- Dedicated merch area
- No commission
- Artist to organise seller or venue can assist

## OUR TEAM

The core team at Lion Arts Factory comes from a music background; venue bookings, festival logistics, marketing, artist management. We are not just a hospitality venue with a stage in the corner - music is in our blood, we care about what we do and this shows in our attention to detail and marketing strategy.

# MAIN ROOM SPECS

PREFERRED PRODUCTION SUPPLIER — NOVATECH

PREFERRED BACKLINE SUPPLIER — ACTION AUDIO LOGIC

## AUDIO

- 1 Audio Console - Avid Venue SC48 with backup UPS APC 240v/450va
- 1 Dolby Lake DLP88 Digital System Controller
- 6 Line Array Speaker L-Acoustics Kudo
- 1 Powered Speaker L-Acoustics 112-P Centre Fill
- 4 Subwoofer L-Acoustics SB218 Dual 18"
- 1 Amp Rack L-Acoustics LA-RAK AES Touring
- 3 Amplified Controller L-Acoustics LA8 4ch
- 8 Active Speaker L-Acoustics 115XT-HiQ
- 1 Subwoofer L-Acoustics DV-Sub Triple 15"
- 1 Powered Speaker L-Acoustics 112-P (Booth)
- 1 Amp Rack L-Acoustics LA-RAK AES Touring
- 3 Amplified Controller L-Acoustics LA8 4ch
- 1 Mass Multicore Whirlwind 58ch 100m
- 1 Custom Mass Splitter - In Custom Rack
- 1 Shure Beta 52A Kick Drum Microphone
- 2 Microphone Shure Beta 91 Half-Cardioid Condenser
- 8 Microphone Sennheiser E904 Cardioid Drum
- 2 Sennheiser E906
- 2 Sennheiser E835
- 1 Sennheiser E815S Switch Mic
- 6 Sure Beta n58
- 8 Shure SM81
- 1 Audix D6
- 8 Superlux CM-H8K Condenser Microphone
- 6 Microphone Shure SM57 Dynamic Instrument
- 6 Microphone Shure Beta 57A Dynamic Instrument
- 6 Microphone Shure SM58 Dynamic Vocal
- 6 Microphone Shure Beta 58A Dynamic Vocal
- 8 BSS AR-133 Active DI
- 4 Microphone Stand K&M Heavy Mini Telescopic Boom

- 20 Microphone Stand K&M Mini Telescopic Boom
- 6 Microphone Stand K&M Tall Telescopic Boom
- 10 Microphone Stand K&M Tall Boom
- 4 Microphone Stand K&M Round Base Straight
- 1 Comms equipment between FOH & Monitors
- 1 COMMS - BELTPACK, FLASHER, HEADSET
- 1 All associated cables

## DJ EQUIPMENT

- 1 Stage Megadeck 900 x 2000mm (on wheels)
- 2 CD Player Pioneer CDJ 2000 Nexus
- 1 DJ Mixer Pioneer DJM 900 Nexus
- 1 Ethernet Switch Netgear Gigabit 8 Port
- 5 Powered speaker qsc k12.2 (12" portable pa)
- 3 Speaker stands to suit
- 1 Powered sub RCF 705

## LIGHTING

- 1 Lighting Console Grandma2 Command Wing and Dell Touchscreen all in one PC
- 6 Moving Profile Martin MAC700
- 8 Moving Wash Light GLP Impression 90/10deg
- 8 Moving Wash Light GLP Impression 90/25deg
- 4 LED Strobe SGM Q7W White Blinders
- 4 LED Stormy 1320CC strobes
- 6 Prolights Pixie Beam
- 3 Haze Machine Base Hazer Pro DMX
- 1 Fan Vornado High Velocity
- 1 Jands DMX splitter (For Universe 1)

## VISION

- 30 LED Panel ROB CB 5.77mm (3.6m x 2.4m)
- 1 Brompton Tessera T1 LED Processor
- 1 Barco PDS902-3G Presentation Switcher
- 1 LED processing computer with Resolume software
- 1 LCD Monitor Dell HD 21.5" Wide Screen
- 1 Distro Jands PDS12-R 3 Phase

MOV is the preferred format for LED screen visuals, PNG the preferred format for still images. Preferred output is 1920 x 1080 but can work with any 16:9/1080p image.

## LED STRIPS

- 42 LED Pixel Mapping Strip 1m
- 5 LED Controller
- 1 Ethernet switch HP 24-way (In back of Stage rack)
- 1 Ethernet switch Netgear 24Port (at FOH OPS Position)

## BACKLINE

- 1 Vox AC30
- 1 Fender Hot Rod Deville 4x10
- 1 Ampeg 4x10 Bass Cabinet
- 1 Ampeg SVT350H Bass Head
- 3 Guitar Stands
- 2 Keyboard Stands

## STAGE DIMENSIONS

13m x 3.5m. 900mm High  
Visible stage space of 7m x 3.5m

# FRONT ROOM SPECS

PREFERRED PRODUCTION SUPPLIER — NOVATECH

In addition to our main band room, we have a secondary front room stage with a cap of up to 300, ideal for underplays (booked within 8 weeks of event date), multi-stage events, informal functions etc.

Please enquire about the front room with the venue booker as relevant.

## AUDIO

- 1 X32 Audio Console Behringer X32 Digital 40ch
- 1 BGULINK Mixer Behringer Ultra Link Pro Line
- 2 S16 Behringer S16 Digital Snake 16In 8Out
- 1 LA8 Amplified Controller L-Acoustics LA8 4ch
- 4 ARCW Active Speaker L-Acoustics ARCS WIDE 2 Way
- 2 SB118 Subwoofer L-Acoustics SB118 Single 18"
- 2 8XT Compact Speaker L-Acoustics 8XT
- 4 HD12A Powered Speaker RCF HD12A

Mics, stands & cable package as per main room.

## LIGHTING

- 2 PIXIEW Moving Wash Light ProLights Pixiewash
- 12 PIXIEB Moving Beam ProLights Pixie Beam
- 7 LEDMPAR2 LED Multipar Litecraft
- 1 STATOMIC DMX Strobe Martin Atomic 3000
- 45 LEDPMS LED Pixel Mapping Strip - Indoor 1m
- 1 HAZEB Haze Machine Base Hazer Pro DMX
- 1 STRMDKXL Stream Deck XL Elgato USB Controller

## STAGE DIMENSIONS

4.5m x 3m. 600mm High

















# VENUE INFO

## DRESSING ROOMS

Lion Arts Factory is equipped with two spacious, private green rooms as well as private bathrooms for artists.

## PARKING

Unfortunately there is no parking on-site in the courtyard- we have a 15 min cap on car access for load-in. There is cheap parking at the Wilson car park 400m away on Hindley st as well as free street parking in adjacent streets. Please liaise with venue managers on the day.

## WIFI PASSWORD

-lionarts2020!@

## SMOKE/HAZE FX

Please note that in order to facilitate the use of theatrical haze/smoke the venue's detection system needs to be isolated. Our staff can do this for you, but it is the responsibility of the hirer to notify venue staff and confirm isolation is in place before utilising any haze/smoke (including for testing/programming).

There are also specific doors which need to remain closed to prevent smoke/haze entering the basement/band room area (which cannot be isolated). If smoke/haze is utilised without first consulting venue staff or the relevant doors left unnecessarily open by touring personnel, you may be charged out of settlement for Fire Department callout fees.





# CONTACTS



## BOOKINGS

JESSE COULTER

JESSE@LIONARTSFACTORY.COM.AU

## MARKETING

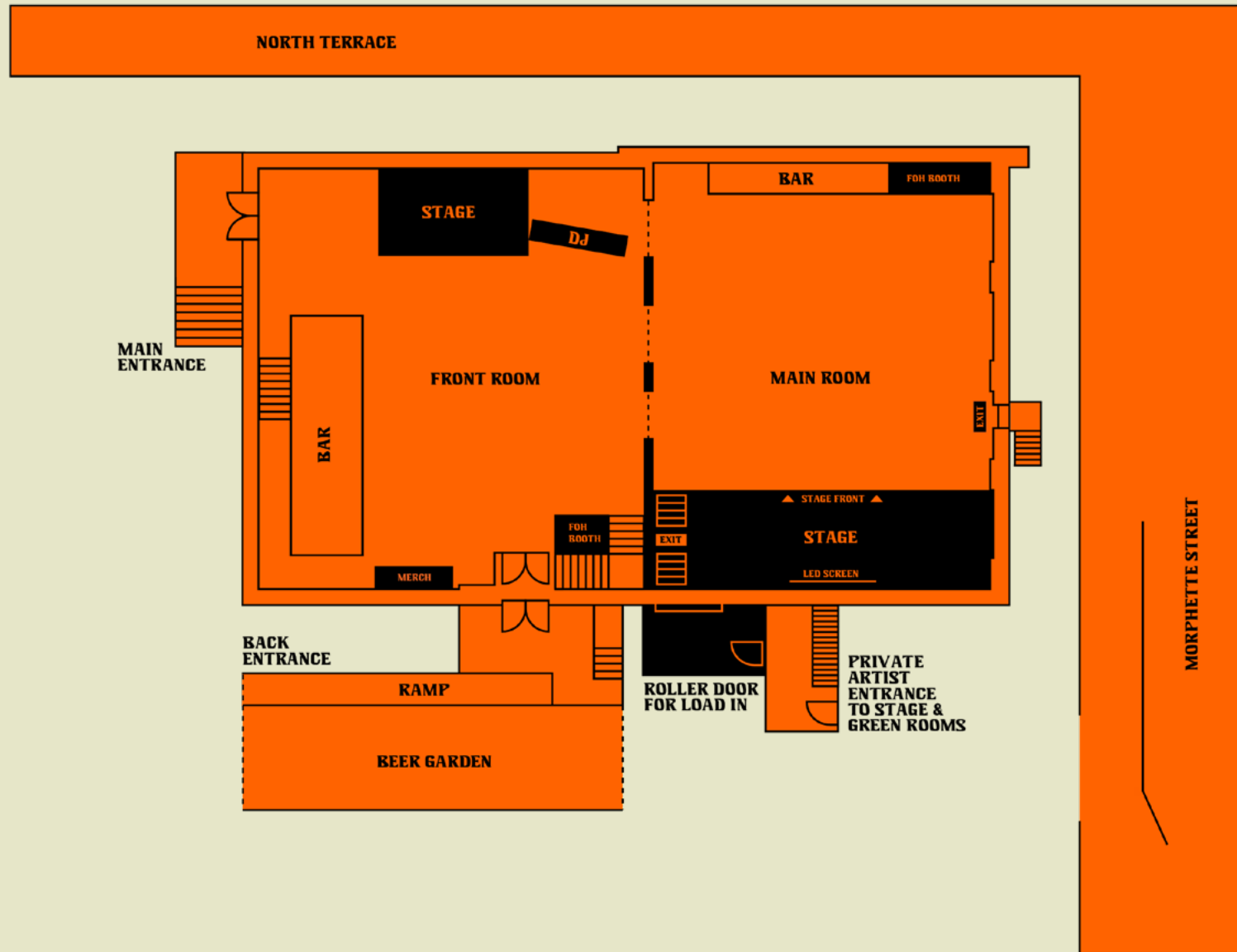
CHARLOTTE BEAN

CHARLOTTE@LIONARTSFACTORY.COM.AU

## PRODUCTION

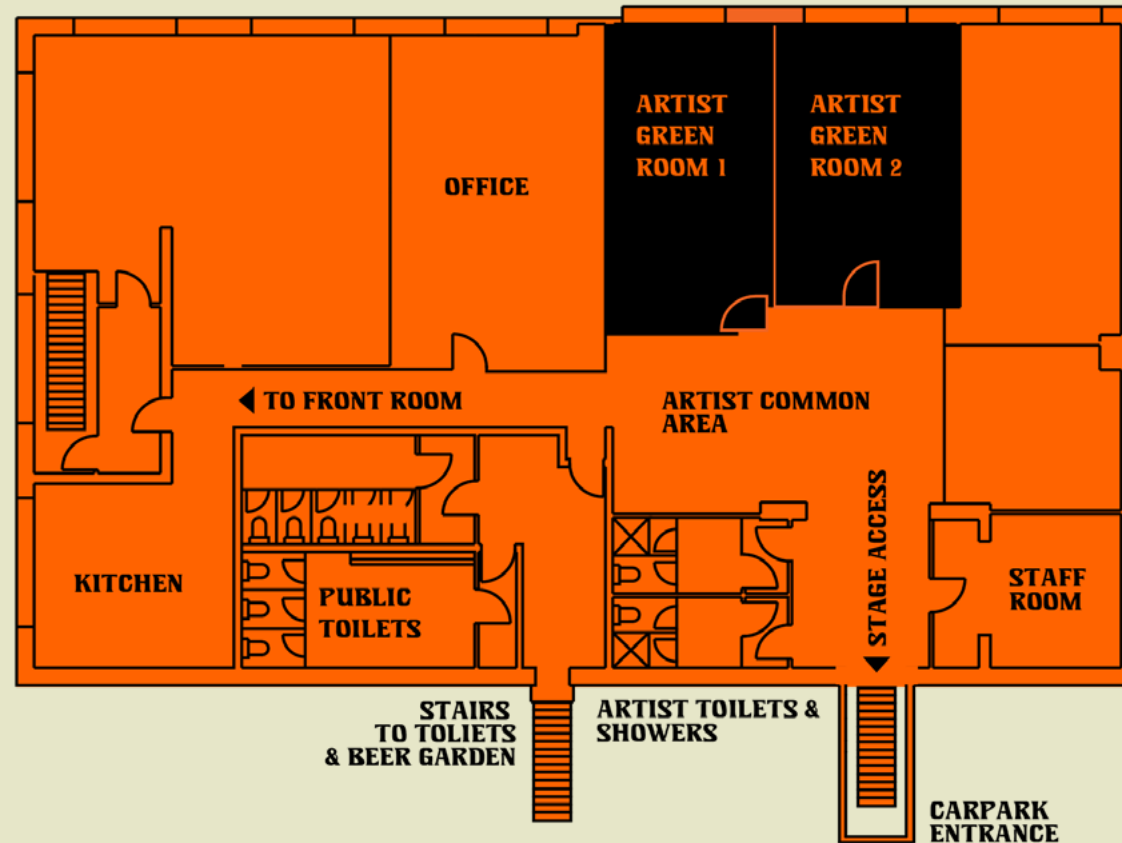
DECLAN SMITH

DSMITH@NCET.CO



# UPSTAIRS MAP





# DOWNSTAIRS MAP



*Factory*  
ADELAIDE S.A.