

LION ARTS
FACTORY



VENUE SPECS

LION ARTS FACTORY
KAURNA LAND

INTRODUCTION

PRODUCTION

Boasting a state of the art PA & lighting package, 2.5m X 4m LED screen, ample mic & cabling packages, and friendly FOH staff with years of experience, Lion Arts has the spec to pull off just about any show without bringing in external production.

ARTIST EXPERIENCE

With some of Australia's largest and most comfortable green rooms, world class production, friendly staff, a generous hospitality offering, on-site parking and a great central location, Lion Arts factory prides itself on offering artists everything necessary for an easy and memorable show.

MARKETING

Lion Arts Factory offers in-house marketing, including everything from photography, videography, graphic design, newsletters to a subscriber base of 24k and our own paid advertising spend for use across Facebook, Instagram and more upon request.

PUNTER EXPERIENCE

A heritage listed building with a contemporary fit out, Lion Arts Factory features high ceilings, great sight lines, multiple bars, chill areas, a smoking area and world-class audio visual production (all housed in an elegant but fun setting), giving punters the best possible experience.

MERCH

- Dedicated merch area
- No commission
- Artist to organise seller or venue can assist

OUR TEAM

The core team at Lion Arts Factory comes from a music background; venue bookings, festival logistics, marketing, artist management. We are not just a hospitality venue with a stage in the corner - music is in our blood, we care about what we do and this shows in our attention to detail and marketing strategy.

MAIN ROOM SPECS

PREFERRED PRODUCTION SUPPLIER — NOVATECH

PREFERRED BACKLINE SUPPLIER — ACTION AUDIO LOGIC

AUDIO

FOH Control

Avid Venue SC48 with UPS
Dolby Lake LP4D12 Digital System Controller
APB Mix-Switch Analogue Console Switcher

FOH Audio System

- 6 Acoustics Kudo (3 per side)
- 1 L-Acoustics 112-P (Centre Fill)
- 4 Subwoofer L-Acoustics SB218

L Acoustics LA8 Amplification

Monitor System

- 8 L Acoustics 115XT-HiQ
 - 1 Subwoofer L-Acoustics DV-Sub
- L Acoustics LA8 Amplification

Stage

Custom 58ch 2way Mass Splitter
LKP37 Stage Patch Kit
Whirlwind 58ch Mass Core 100m (FOH)
Whirlwind 58ch Mass Core 7m (Touring Mons)
Audio Mic Cable Kit
Audio Stage Power Kit
Mic Stand Kit (40+ Stands)

Microphone Package

- 6 Shure SM57
- 6 Shure Beta 57A
- 6 Shure SM58
- 6 Shure Beta 58A
- 2 Shure Beta 91
- 1 Shure Beta 52A
- 1 Audix D6
- 8 Sennheiser E904
- 2 Sennheiser E906
- 2 Sennheiser E835
- 1 Sennheiser E815S

- 8 Superlux CMH8K
- 8 BSS AR-133 Active DI

Comms System

Talkback, Strobe & Buzzer at FOH and Stage.

*2x Shielded Cat5e tie lines FOH – Stage for touring consoles.

DJ EQUIPMENT

- 4 CD Player Pioneer CDJ 2000 Nexus
- 2 DJ Mixer Pioneer DJM 900 Nexus
- 1 Ethernet Switch Netgear Gigabit 8 Port
- 1 Stage Megadeck 900 x 2000mm (on wheels)

LIGHTING

Lighting Control

Grandma2 Command Wing and Dell Touchscreen PC
Elgato Streamdeck XL Custom Controller

Lighting Fixtures

- 6 Moving Profile Martin MAC700
- 8 Moving Wash Light GLP Impression 90/10deg
- 8 Moving Wash Light GLP Impression 90/25deg
- 4 LED Strobe SGM Q7W White Blinders
- 4 LED Stormy 1320CC strobes
- 6 Prolights Pixie Beam
- 2 Haze Machine Base Hazer Pro DMX
- 1 Fan Vornado High Velocity
- 1 Jands DMX splitter (For Universe 1)

*Lighting Plan and Patch available on request.

LED STRIPS

- 42 LED Pixel Mapping Strip 1m
- LED Control, power and data distribution

*Control via Resolume / Streamdeck.

VIDEO

4.2m x 2.4m LED Screen
Native Resolution: 728 x416
14x ROE CB 5.77mm
Brompton Tessera T1 LED Processor
LED Power distribution and Cabling

Video Control:

Presentation computer with Resolume software.
Barco PDS902-3G Presentation Switcher

MOV is the preferred format for LED screen visuals,
PNG the preferred format for still images.
Preferred output is 1920 x 1080 but can work with any
16:9/1080p image.

BACKLINE

- 1 Vox AC30
- 1 Fender Hot Rod Deville 4x10
- 1 Ampeg 4x10 Bass Cabinet
- 1 Ampeg SVT350H Bass Head
- 3 Guitar Stands
- 2 Keyboard Stands

STAGE DIMENSIONS

13m x 3.5m. 900mm High
Visible stage space of 7m x 3.5m

1 House Drum Riser: 2.4m x 2m. 300mm High
(No Wheels)

FRONT ROOM SPECS

PREFERRED PRODUCTION SUPPLIER — NOVATECH

In addition to our main band room, we have a secondary front room stage with a cap of up to 300, ideal for underplays (booked within 8 weeks of event date), multi-stage events, informal functions etc.

Please enquire about the front room with the venue booker as relevant.

AUDIO

FOH Control

32 Audio Console Behringer X32 Digital 40ch
2 S16 Behringer S16 Digital Snake 16In 8Out
Rane Line Mixer for DJ System input

FOH Audio System

4 L-Acoustics ARCS WIDE 2 Way
2 L-Acoustics SB118 subwoofer Single 18"
L-Acoustics LA8 Amplification

Monitor System

4 RCF HD12A Powered Speaker

Mics, stands & cable package as per main room.

LIGHTING

2 ProLights Pixiewash Moving Wash Light
12 ProLights Pixie Beam
6 Litecraft LED Multipar
1 Stormy 3000CC LED Strobe
45 LED Pixel Mapping Strip - 1m
1 Haze Machine Base Hazer Pro DMX
1 Stream Deck XL Elgato USB Controller

STAGE DIMENSIONS

4.5m x 3m. 600mm High









VENUE INFO

DRESSING ROOMS

Lion Arts Factory is equipped with two spacious, private green rooms as well as private bathrooms for artists.

PARKING

Unfortunately there is no parking on-site in the courtyard- we have a 15 min cap on car access for load-in. There is cheap parking at the Wilson car park 400m away on Hindley st as well as free street parking in adjacent streets. Please liaise with venue managers on the day.

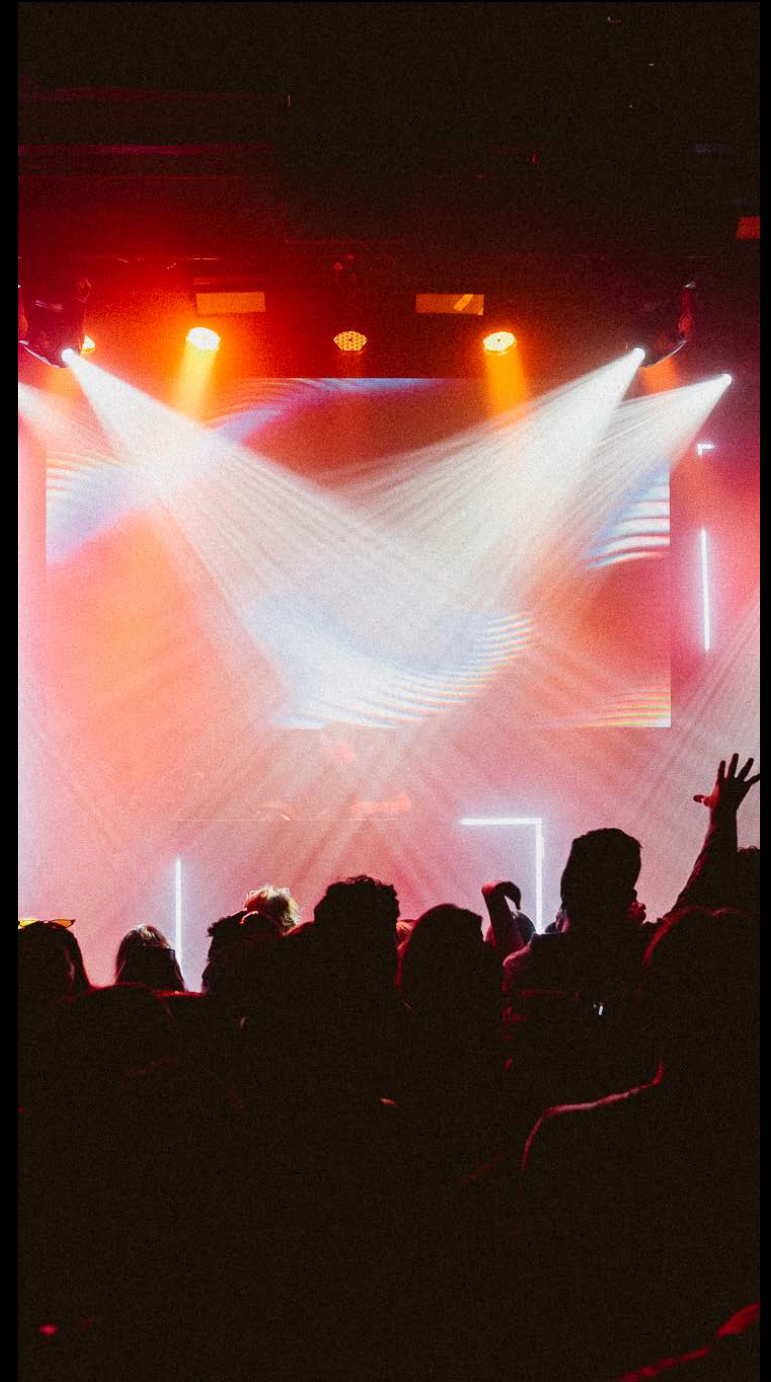
WIFI PASSWORD

-lionarts2020!@

SMOKE/HAZE FX

Please note that in order to facilitate the use of theatrical haze/smoke the venue's detection system needs to be isolated. Our staff can do this for you, but it is the responsibility of the hirer to notify venue staff and confirm isolation is in place before utilising any haze/smoke (including for testing/programming).

There are also specific doors which need to remain closed to prevent smoke/haze entering the basement/band room area (which cannot be isolated). If smoke/haze is utilised without first consulting venue staff or the relevant doors left unnecessarily open by touring personnel, you may be charged out of settlement for Fire Department callout fees.



CONTACTS



BOOKINGS

JESSE COULTER

JESSE@LIONARTSFACTORY.COM.AU

MARKETING

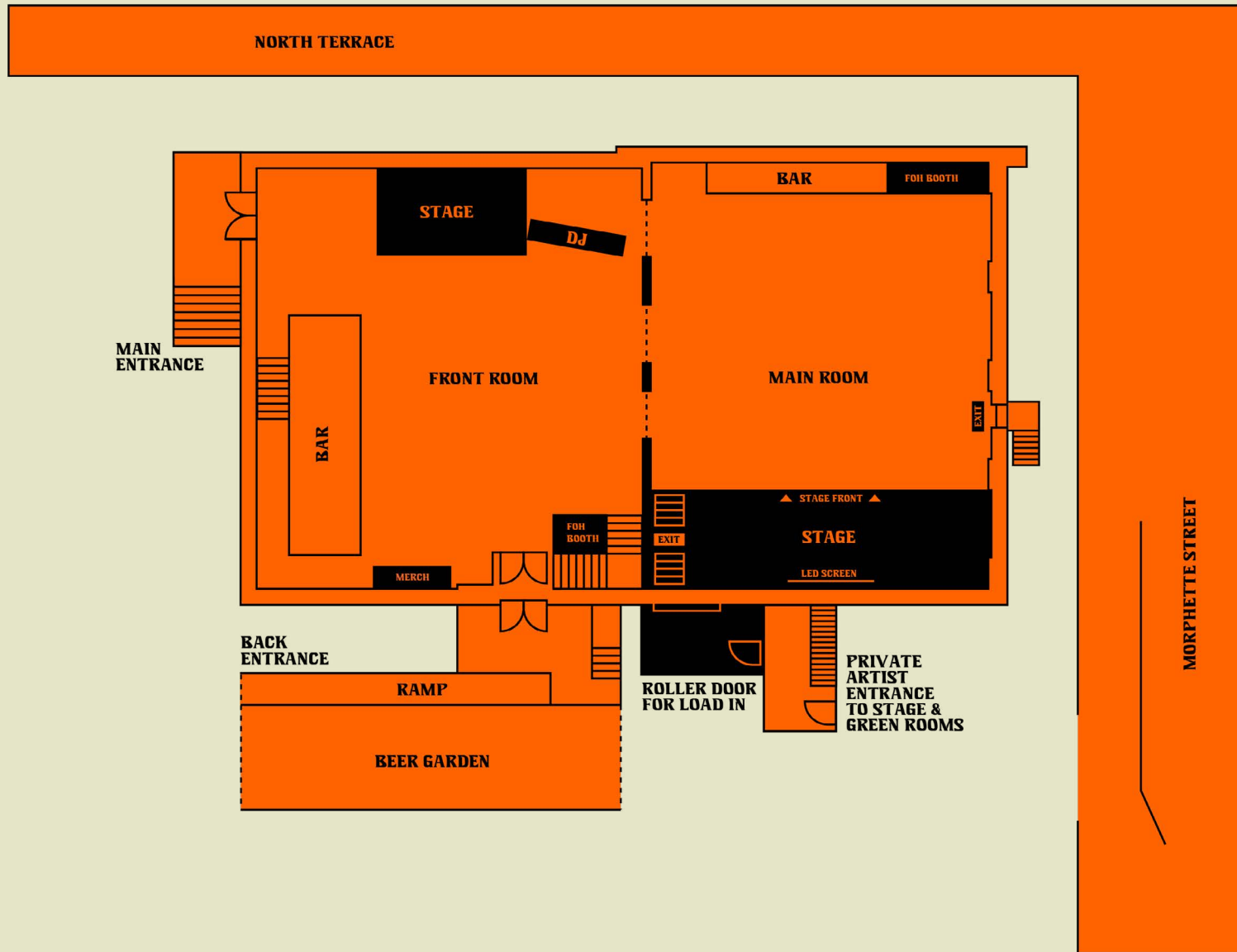
CHARLOTTE BEAN

CHARLOTTE@FIVEFOURENTERTAINMENT.COM.AU

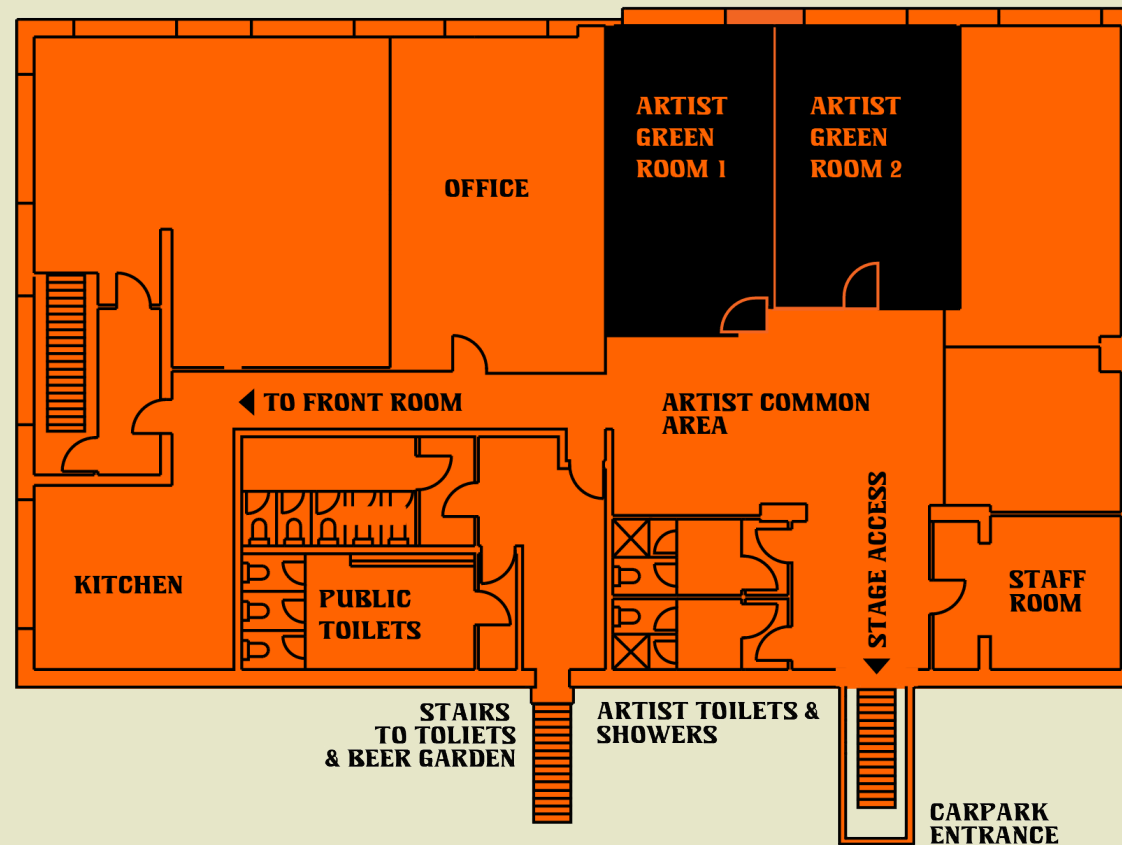
PRODUCTION

NATHAN SMITH

PRODUCTION@LIONARTSFACTORY.COM.AU



UPSTAIRS MAP



DOWNSTAIRS MAP



Factory
ADELAIDE S.A.